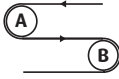


U20/06.06/Z/NR

PVCCON 2R/12 B30 Z/V06 AS

KA2BL3003

**TECHNICAL INFORMATION**

	IMPERIAL	METRIC
<b>Max Production Width</b>	118.11in	3000mm
<b>Total Thickness</b>	0.12in	3mm
<b>Mass</b>	0.72lb/ft <sup>2</sup>	3.5kg/m <sup>2</sup>
<b>Tensile force at 1% elongation (static)</b>	68lb/in Internal Method - ref. ISO 21181	12N/mm
<b>Working Temp.</b>	+14/+158F <sup>0</sup>	-10/+70C <sup>0</sup>
<b>Flexion (A)</b>	2.76in 70mm	
<b>Counter Flexion (B)</b>	3.54in 90mm	

**COEFFICIENT OF FRICTION** (bottom side) - **Steel** 0.35

**BEST USED FOR**

**GENERAL CHARACTERISTICS**

2 ply black PVC double cover. Smooth top and negative pyramid bottom. Antistatic

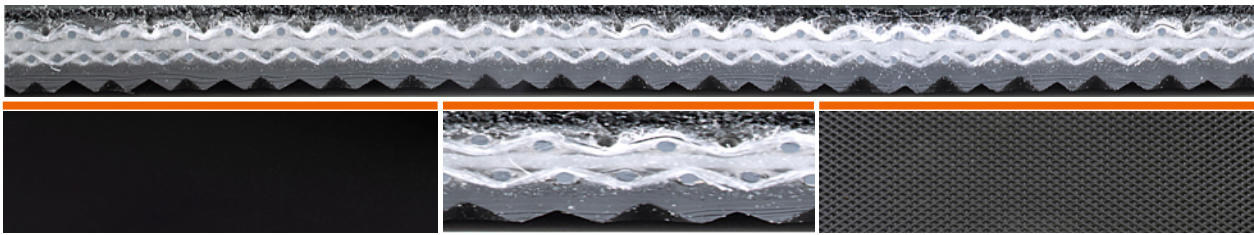
**RECOMMENDED USES**

Slider Bed | Flat Rollers

**SPECIAL CHARACTERISTICS**

- ✓ **Antistatic**  
ISO 284 & 21178

**BELT CONSTRUCTION INFORMATION**



TOP SIDE (Carrying)		TENSION MEMBER		BOTTOM SIDE (Pulley)	
<b>Material</b>	PVC	<b>Interply</b>	PVC	<b>Material</b>	PVC
<b>Color</b>	Black (B)	<b>Weft</b>	Rigid (R)	<b>Color</b>	Black (B)
<b>Thickness</b>	0.02in 0.6mm	<b>Plies</b>	2	<b>Thickness</b>	0.03in 0.8mm
<b>Hardness</b> ISO 868	74 Shore A	<b>Fabric</b>	Rigid (R)	<b>Hardness</b> ISO 868	74 Shore A
<b>Surface</b>	Smooth - Shiny (⌋)			<b>Surface</b>	Negative Pyramid (Z)

\*Because of continuous development above data is subjected to change without prior notice by Sampla. This data replaces that included in previous publications. Sampla excludes any liability for the incorrect use of the above stated information.

RELEASED 01/01/2019